

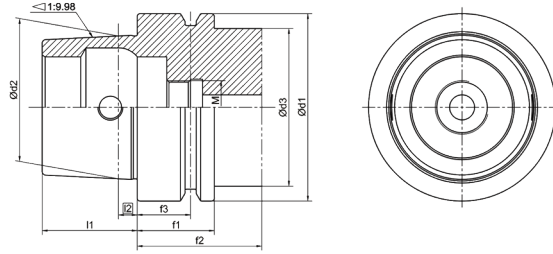
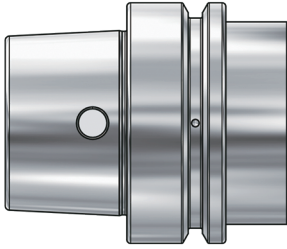
**TOOL HOLDERS**

---

**HSK-E**

## HSK-E Taper Standard

### HSK-E 锥柄标准



Size	d1	d2	d3	l1	l2	f1	f2	f3
HSK20E	20	15.203	16	10	2	8	16	3.5
HSK25E	25	19.006	20	13	2.5	10	20	4.5
HSK32E	32	24.007	26	16	3.2	20	35	16
HSK40E	40	30.007	34	20	4	20	35	16
HSK50E	50	38.009	42	25	5	26	42	18
HSK63E	63	48.010	53	32	6.3	26	42	18

**Taper standard:** DIN 69893; ISO 12164

**Material:** Alloyed case hardened steel

**Surface Treatment:** Blackening and Bright

**Taper tolerance:** <AT3

**Hardness:** HRC 56-60

**Carbon depth:** 0.8±0.2mm

**Surface Roughness:** Ra<0.2µm

**Balancing:** G6.3/15000; G2.5/25000

## HSK-E TOOLING SYSTEM HSK-E 工具系统目录

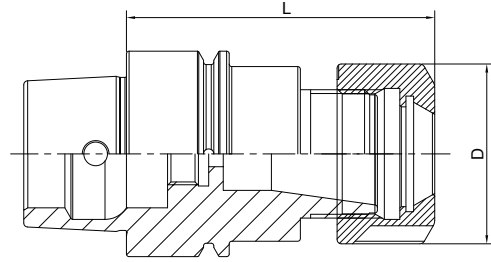
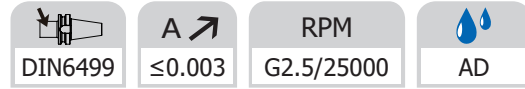
---

ER Collet Chuck.....	F.38
ER 弹簧夹头刀柄.....	F.38
Face Mill Holder.....	F.39
面铣刀柄.....	F.39
End Mill Holder.....	F.40
侧固刀柄.....	F.40
Test Arbor.....	F.41
主轴检测棒.....	F.41



## ER Collet Chuck

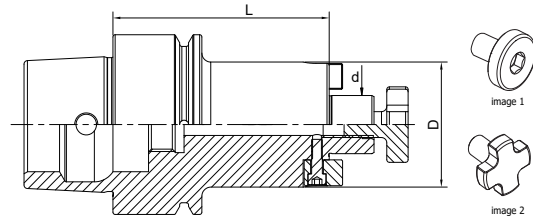
### ER 弹簧夹头刀柄



Size	D	L	Capacity
HSK32E-ER11M-60	16	60	1-7
HSK32E-ER16M-60	22	60	1-10
HSK32E-ER20M-60	28	60	1-13
HSK32E-ER16A-60	28	60	1-10
HSK32E-ER20A-60	34	60	1-13
HSK40E-ER16A-60	28	60	1-10
HSK40E-ER20A-60	34	60	1-13
HSK40E-ER25-60	42	60	2-16
HSK40E-ER32-70	50	70	2-20
HSK50E-ER16A-80	28	80	1-10
HSK50E-ER25-80	42	80	2-16
HSK50E-ER32-85	50	85	2-20
HSK50E-ER40-100	63	100	3-26
HSK63E-ER16A-75	28	75	1-10
HSK63E-ER25-80	42	80	2-16
HSK63E-ER32-90	50	90	2-20
HSK63E-ER40-120	63	120	3-26

**Face Mill Holder**  
面铣刀柄

DIN6499	A $\leq 0.005$	RPM G2.5/25000	AD
---------	----------------	----------------	----

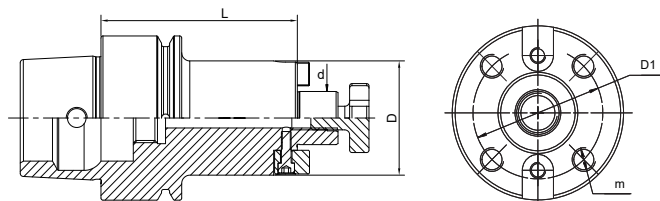


Size	d	D	L1
HSK32E-FMB16-50	16	38	50
HSK40E-FMB16-50	16	38	50
HSK40E-FMB22-50	22	48	50
HSK40E-FMB27-55	27	58	55
HSK50E-FMB16-50	16	38	50
HSK50E-FMB22-60	22	48	60
HSK50E-FMB27-60	27	58	60
HSK50E-FMB32-60	32	78	60
HSK63E-FMB16-50	16	38	50
HSK63E-FMB22-60	22	48	60
HSK63E-FMB27-60	27	58	60
HSK63E-FMB32-60	32	78	60

Face mill holder is with retaining screw (image 2) except China, it is with universal screw (image 1) in China.  
中国市场面铣刀柄标配圆头螺钉 (图 1), 其他国家标配十字花螺钉 (图 2).

**Face Mill Holder**  
面铣刀柄

DIN6499	A $\leq 0.005$	RPM G2.5/25000	AD
---------	----------------	----------------	----

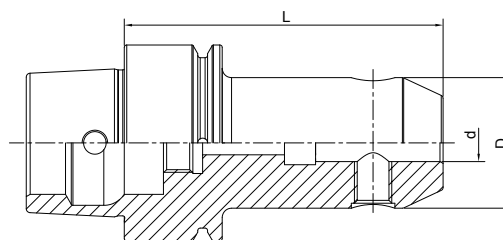


Size	d	D	D2	L	M	m
HSK63E-FMB40-60	40	88	66.7	60	M20	M12

FMB40 tool holder is with one retaining screw (image 2) . but it is with one universal screw (image 1) in China.

FMB40 刀柄中国市场面铣刀柄标配圆头螺钉 (图 1), 其他国家标配十字花螺钉 (图 2).

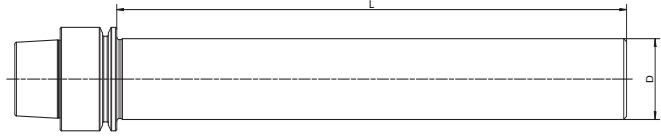
## End Mill Holder Weldon 侧固刀柄



Size	d	D	L	M	Screw Quantity
HSK32E-SLA06-60	6	25	60	M6	1
HSK32E-SLA08-60	8	28	60	M8	1
HSK32E-SLA10-65	10	35	65	M10	1
HSK40E-SLA06-60	6	25	60	M6	1
HSK40E-SLA08-60	8	28	60	M8	1
HSK40E-SLA10-60	10	35	60	M10	1
HSK40E-SLA12-70	12	42	70	M12	1
HSK40E-SLA14-75	14	44	75	M12	1
HSK40E-SLA16-75	16	48	75	M14	1
HSK40E-SLA20-75	20	52	75	M16	1
HSK50E-SLA06-65	6	25	65	M6	1
HSK50E-SLA08-65	8	28	65	M8	1
HSK50E-SLA10-65	10	35	65	M10	1
HSK50E-SLA12-80	12	42	80	M12	1
HSK50E-SLA14-80	14	44	80	M12	1
HSK50E-SLA16-80	16	48	80	M14	1
HSK50E-SLA18-80	18	50	80	M14	1
HSK50E-SLA20-80	20	52	80	M16	1
HSK50E-SLA20-100	20	52	100	M16	1
HSK50E-SLA25-102	25	65	102	M18*2	2
HSK63E-SLA06-65	6	25	65	M6	1
HSK63E-SLA08-65	8	28	65	M8	1
HSK63E-SLA10-65	10	35	65	M10	1
HSK63E-SLA12-80	12	42	80	M12	1
HSK63E-SLA14-80	14	44	80	M12	1
HSK63E-SLA16-80	16	48	80	M14	1
HSK63E-SLA18-80	18	50	80	M14	1
HSK63E-SLA20-80	20	52	80	M16	1
HSK63E-SLA25-110	25	65	110	M18*2	2
HSK63E-SLA32-110	32	72	110	M20*2	2
HSK63E-SLA40-120	40	80	120	M20*2	2

**Test Arbor**  
**主轴检测棒**

A ↗  
 ≤0.002



Size	D	L
HSK25E-20-150	20	150
HSK32E-25-180	25	180
HSK40E-25-180	25	180
HSK50E-32-200	32	200